



# CannaBusiness Laboratories, LLC

2554 Palumbo Dr. Lexington, KY 40509

## Certificate of Analysis

**Customer:**

Organic Plus Bros, LLC  
682 W Bagley Rd, A6

Berea, OH 44017

Collected Date:

Received Date: **8/20/2021**

COA Released: **8/23/2021**

Comments:

Sample ID: **210817031**

Order Number: **CB210817007**

Sample Name: **Whole Plant Tincture -  
Morning Clarity (1200mg)**

External Sample ID:

Batch Number: **#WP03081221.1200**

Product Type: **Other**

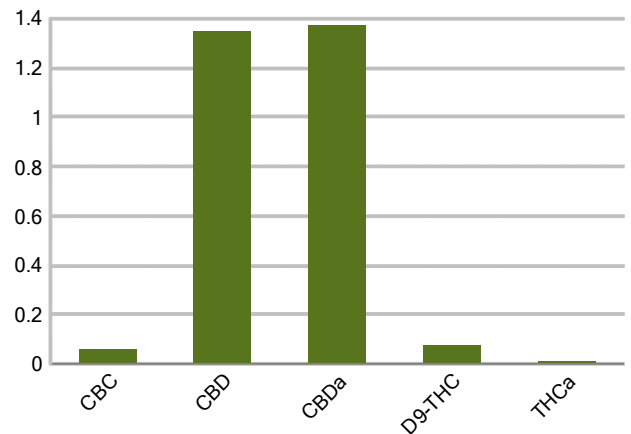
Sample Type: **Other**

### CANNABINOID PROFILE (Serving Size = 30 mL)

Analyte	LOQ (%)	% weight	mg/ml	mg/unit
CBC	0.01	0.060	0.554	16.62
CBD	0.01	3.926	39.251	1177.53
CBDa	0.01	1.372	12.76	382.80
CBDV	0.01	ND	ND	ND
CBG	0.01	ND	ND	ND
CBGa	0.01	ND	ND	ND
CBN	0.01	ND	ND	ND
d8-THC	0.01	ND	ND	ND
d9-THC	0.01	0.074	0.687	20.61
THCa	0.01	0.012	0.108	3.24
<b>Total Cannabinoids</b>		<b>5.275</b>	<b>51.79</b>	<b>1553.38</b>
<b>Total Potential THC</b>		<b>0.084</b>	<b>0.781</b>	<b>23.43</b>
<b>Total Potential CBD</b>		<b>5.129</b>	<b>50.44</b>	<b>1513.24</b>
<b>Total Potential CBG</b>		<b>N/A</b>	<b>N/A</b>	<b>ND</b>



Cannabinoids (% weight)



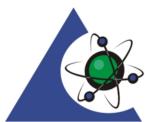
**Ratio of Total Potential CBD to Total Potential THC 30.37 : 1**

**Ratio of Total Potential CBG to Total Potential THC N/A**

\*Total Cannabinoids refers to the sum of all cannabinoids detected.

\*Total Potential CBD = (0.877 x CBDa) + CBD. \*Total Potential THC = (0.877 x THCa) + THC. \*Total Potential CBG = (0.877 x CBGa) + CBG.

\*Total Potential THC/CBD are calculated to take into account the loss of an acid group during decarboxylation.



**PJLA**  
Testing  
Accreditation #109588

Authorized Signature

Laboratory Manager

Jamie Hobgood

08/23/2021 4:20 PM

DATE

This product has been tested by CannaBusiness Laboratories using validated testing methodologies and a quality system. Values reported relate only to the product tested. CannaB Laboratories makes no claims as to the efficacy, safety, or other risks associated with any detected or non-detected levels of any compounds reported herein. This Certificate shall be reproduced except in full, without the written permission of CannaBusiness Laboratories. Uncertainty information is available on request. Photo is of sample received by the lab and may vary from final packaging. The results apply to the sample as received. ISO/IEC 17025:2017 Accredited.