



Certificate of Analysis

CANNABUSINESS LABORATORIES, LLC

Customer:

Organic Plus Bros, LLC
682 W Bagley Rd, A6
Berea, OH 44017

Sample ID **220919008**
Order Number **CB220919004**
Sample Name **RELAX 30mg CBD Gummy**

Received Date **9/21/2022**
COA Released **9/23/2022**

External Sample ID

Batch Number
Product Type **Edible**
Sample Type **Edible**

Comments

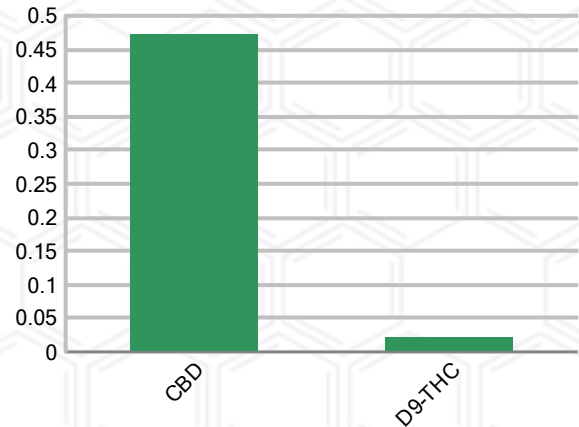
CANNABINOID PROFILE (Product Size = 5.11 g)

Analyte	LOQ (%)	% Weight	mg/g	mg/unit
CBC	0.01	ND	ND	ND
CBD	0.01	0.473	4.733	24.19
CBDa	0.01	ND	ND	ND
CBDV	0.01	ND	ND	ND
CBG	0.01	ND	ND	ND
CBGa	0.01	ND	ND	ND
CBN	0.01	ND	ND	ND
d8-THC	0.01	ND	ND	ND
d9-THC	0.01	0.021	0.211	1.08
THCa	0.01	ND	ND	ND
Total Cannabinoids		0.494	4.943	25.26
Total Potential THC		0.021	0.210	1.07
Total Potential CBD		0.473	4.733	24.19
Total Potential CBG		N/A	N/A	ND
Ratio of Total Potential CBD to Total Potential THC				22.52 : 1
Ratio of Total Potential CBG to Total Potential THC				N/A

SAMPLE IMAGE



CANNABINOIDS % Weight



*Total Cannabinoids refers to the sum of all cannabinoids detected.

*Total Potential CBD = (0.877 x CBDa) + CBD. *Total Potential THC = (0.877 x THCa) + THC. *Total Potential CBG = (0.877 x CBGa) + CBG.

*Total Potential THC/CBD are calculated to take into account the loss of an acid group during decarboxylation.



J. Hobgood
Laboratory Manager

SIGNATURE

Jamie Hobgood

LABORATORY MANAGER

09/23/2022 1:47 PM

DATE

This product has been tested by CannaBusiness Laboratories using validated testing methodologies and a quality system. Values reported relate only to the product tested. CannaBusiness Laboratories makes no claims as to the efficacy, safety, or other risks associated with any detected or non-detected levels of any compounds reported herein. This Certificate shall not be reproduced except in full, without the written permission of CannaBusiness Laboratories. Photo is of sample received by the lab and may vary from final packaging. The results apply to the sample as received.



Certificate of Analysis

CANNABUSINESS LABORATORIES, LLC

Customer

Organic Plus Bros, LLC
682 W Bagley Rd, A6
Berea, OH 44017



Overall Batch Results	
Pesticide	Moisture Content
Potency	Water Activity
Mycotoxins	Heavy Metals
Microbial Screen	Residual Solvents
Terpenoids	

Sample Name: RELAX 30mg CBD Gummy
Sample ID: 220919008
Order Number: CB220919004
Product Type: Edible
Sample Type: Edible
Received Date: 09/21/2022
Batch Number:
COA released: 09/23/2022 1:47 PM

Potency (mg/g)

Date Tested: 09/23/2022

Method: CB-SOP-028

Instrument:

0.021 % Total THC	0.473 % Total CBD	0.494 % Total Cannabinoids	4.943 mg/g Total Cannabinoids
-----------------------------	-----------------------------	--------------------------------------	---

Analyte	Result	Units	LOQ	Result	Units
CBC (Cannabichromene)	ND	%	0.010	ND	mg/g
CBD (Cannabidiol)	0.473	%	0.010	4.733	mg/g
CBDa (Cannabidiolic Acid)	ND	%	0.010	ND	mg/g
CBDV (Cannabidivarin)	ND	%	0.010	ND	mg/g
CBG (Cannabigerol)	ND	%	0.010	ND	mg/g
CBGa (Cannabigerolic Acid)	ND	%	0.010	ND	mg/g
CBN (Cannabinol)	ND	%	0.010	ND	mg/g
D8-THC (D8-Tetrahydrocannabinol)	ND	%	0.010	ND	mg/g
D9-THC (D9-Tetrahydrocannabinol)	0.021	%	0.010	0.211	mg/g
THCa (Tetrahydrocannabinolic Acid)	ND	%	0.010	ND	mg/g



J. Hobgood
Laboratory Manager

Jamie Hobgood

09/23/2022 1:47 PM

SIGNATURE

DATE

NT = Not tested, ND = Not detected; LOQ = Limit of Quantitation; <LOQ = Detected; >ULOL = Above upper limit of linearity; CFU/g = Colony forming units per 1 gram; TNTC = Too numerous to count

This product has been tested by CannaBusiness Laboratories using validated testing methodologies and a quality system. Values reported relate only to the product tested. CannaBusiness Laboratories makes no claims as to the efficacy, safety, or other risks associated with any detected or non-detected levels of any compounds reported herein. This Certificate shall not be reproduced except in full, without the written permission of CannaBusiness Laboratories. Photo is of sample received by the lab and may vary from final packaging. The results apply to the sample as received.